



**Water Monitoring Result at C7 - Windsor House  
Mid-Flood Tide**

Date	Time	Weather Condition	Sampling Depth		Water Temperature			pH			Salinity			DO Saturation		DO		Turbidity			Suspended Solids			
					°C			-			ppt			%		mg/L		NTU			mg/L			
					Value	Average		Value	Average		Value	Average		Value	Average		Value	Average	Value	Average	Value	Average	Value	Average
27/9/19	17:53	Fine	Middle	1.5	26.80	26.80	26.85	8.19	8.19	8.19	29.08	29.08	29.08	92.2	92.9	93.0	6.75	6.82	6.83	2.49	2.49	2.49	7	7.00
	17:55		Middle	1.5	26.90	26.90		8.19	8.19		29.08	29.08		93.3	93.7		6.86	6.90		2.49	2.49		7	
30/9/19	7:16	Fine	Middle	1.5	26.80	26.80	26.85	7.66	7.66	7.66	29.79	29.79	29.79	87.9	88.4	88.8	6.49	6.54	6.58	2.45	2.45	2.45	8	7.50
	7:18		Middle	1.5	26.90	26.90		7.66	7.66		29.79	29.79		89.3	89.5		6.63	6.65		2.45	2.45		7	
2/10/19	8:58	Fine	Middle	1.5	28.60	28.60	28.65	7.58	7.58	7.58	28.98	28.98	28.98	84.4	84.5	84.9	6.14	6.15	6.19	5.64	5.64	5.64	19	<u>19.00</u>
	9:00		Middle	1.5	28.70	28.70		7.58	7.58		28.98	28.98		84.8	85.7		6.18	6.27		5.64	5.64		19	
4/10/19	-	Fine	Middle	-	-	-	-	-	-	-	-	-	-	-	-	-	-	-	-	-	-	-	-	-
	-		Middle	-	-	-		-	-		-	-		-	-		-	-		-	-		-	
8/10/19	16:02	Fine	Middle	1.5	27.10	27.10	27.15	7.67	7.67	7.67	30.68	30.68	30.68	75.0	75.6	75.8	5.33	5.39	5.41	3.40	3.40	3.40	9	8.50
	16:04		Middle	1.5	27.20	27.20		7.67	7.67		30.68	30.68		76.0	76.5		5.43	5.48		3.40	3.40		8	
10/10/19	17:16	Fine	Middle	1.5	26.50	26.50	26.60	7.72	7.72	7.72	30.51	30.51	30.51	87.7	87.9	88.1	6.47	6.49	6.51	3.60	3.60	3.60	2	2.00
	17:18		Middle	1.5	26.70	26.70		7.72	7.72		30.51	30.51		87.9	88.7		6.49	6.57		3.60	3.60		2	
12/10/19	17:52	Fine	Middle	1.5	26.40	26.40	26.45	8.43	8.43	8.43	30.21	30.21	30.21	75.6	76.4	76.7	5.39	5.47	5.50	4.28	4.28	4.28	3	3.00
	17:54		Middle	1.5	26.50	26.50		8.43	8.43		30.21	30.21		77.3	77.6		5.56	5.59		4.28	4.28		3	
14/10/19	19:06	Cloudy	Middle	1.5	28.00	28.00	28.00	7.91	7.91	7.91	29.44	29.44	29.44	76.9	75.3	74.6	5.12	5.01	4.96	2.79	2.44	2.59	4	4.00
	19:07		Middle	1.5	28.00	28.00		7.91	7.91		29.44	29.44		72.8	73.3		4.82	4.88		2.64	2.50		4	
16/10/19	18:24	Cloudy	Middle	1.5	27.10	27.10	27.10	8.00	7.99	7.99	31.90	31.90	31.90	73.6	73.7	73.5	4.90	4.91	4.90	1.48	1.16	1.45	7	6.50
	18:25		Middle	1.5	27.10	27.10		7.99	7.99		31.90	31.90		73.2	73.5		4.88	4.90		1.64	1.50		6	
18/10/19	9:24	Fine	Middle	1.5	25.60	25.60	25.70	7.98	7.98	7.98	30.17	30.17	30.17	90.6	91.0	91.5	6.59	6.63	6.68	3.43	3.43	3.43	3	3.50
	9:26		Middle	1.5	25.80	25.80		7.98	7.98		30.17	30.17		91.8	92.6		6.71	6.79		3.43	3.43		4	
22/10/19	13:58	Fine	Middle	1.5	27.10	27.10	27.15	7.75	7.75	7.75	30.68	30.68	30.68	84.6	85.0	85.5	6.16	6.20	6.25	2.36	2.36	2.36	4	4.00
	14:00		Middle	1.5	27.20	27.20		7.75	7.75		30.68	30.68		85.9	86.6		6.29	6.36		2.36	2.36		4	
24/10/19	16:17	Fine	Middle	1.5	28.10	28.10	28.20	7.62	7.62	7.62	29.43	29.43	29.43	75.4	76.1	76.2	5.37	5.44	5.45	4.25	4.25	4.25	5	5.00
	16:19		Middle	1.5	28.30	28.30		7.62	7.62		29.43	29.43		76.5	76.6		5.48	5.49		4.25	4.25		5	
26/10/19	17:31	Fine	Middle	1.5	26.90	26.90	26.95	7.64	7.64	7.64	28.66	28.66	28.66	79.0	79.4	79.8	5.73	5.77	5.81	2.55	2.55	2.55	3	3.50
	17:33		Middle	1.5	27.00	27.00		7.64	7.64		28.66	28.66		80.0	80.7		5.83	5.90		2.55	2.55		4	

Remarks:  
Single underline denotes exceedance over Action Level.  
Double underline denotes exceedance over Limit Level.



**Water Monitoring Result at C1 - HKCEC Extension  
Mid-Flood Tide**

Date	Time	Weather Condition	Sampling Depth		Water Temperature			pH			Salinity			DO Saturation		DO		Turbidity			Suspended Solids			
					°C			-			ppt			%		mg/L		NTU			mg/L			
			m	Value	Average	Value	Average	Value	Average	Value	Average	Value	Average	Value	Average	Value	Average	Value	Average	Value	Average	Value	Average	
27/9/19	17:53	Fine	Middle	1.5	26.80	26.80	26.85	8.19	8.19	8.19	29.08	29.08	29.08	92.2	92.9	93.0	6.75	6.82	6.83	2.49	2.49	2.49	7	7.00
	17:55		Middle	1.5	26.90	26.90		8.19	8.19		29.08	29.08		93.3	93.7		6.86	6.90		2.49	2.49		7	
30/9/19	7:16	Fine	Middle	1.5	26.80	26.80	26.85	7.66	7.66	7.66	29.79	29.79	29.79	87.9	88.4	88.8	6.49	6.54	6.58	2.45	2.45	2.45	8	7.50
	7:18		Middle	1.5	26.90	26.90		7.66	7.66		29.79	29.79		89.3	89.5		6.63	6.65		2.45	2.45		7	
2/10/19	8:30	Fine	Middle	3.0	28.40	28.40	28.50	7.70	7.70	7.70	30.80	30.80	30.80	86.0	86.9	86.9	6.30	6.39	6.39	5.56	5.56	5.56	12	11.50
	8:32		Middle	3.0	28.60	28.60		7.70	7.70		30.80	30.80		86.9	87.6		6.39	6.46		5.56	5.56		11	
4/10/19	-	Fine	Middle	-	-	-	-	-	-	-	-	-	-	-	-	-	-	-	-	-	-	-	-	-
	-		Middle	-	-	-		-	-		-	-		-	-		-	-		-	-		-	
8/10/19	16:13	Fine	Middle	3.0	27.00	27.00	27.10	7.77	7.77	7.77	28.63	28.63	28.63	90.9	90.9	91.5	6.62	6.62	6.68	4.51	4.51	4.51	10	10.50
	16:15		Middle	3.0	27.20	27.20		7.77	7.77		28.63	28.63		91.7	92.4		6.70	6.77		4.51	4.51		11	
10/10/19	17:23	Fine	Middle	3.0	26.80	26.80	26.85	7.68	7.68	7.68	31.24	31.24	31.24	88.8	89.4	89.9	6.58	6.64	6.69	3.55	3.55	3.55	2	2.00
	17:25		Middle	3.0	26.90	26.90		7.68	7.68		31.24	31.24		90.3	91.1		6.73	6.81		3.55	3.55		2	
12/10/19	18:03	Fine	Middle	3.0	26.80	26.80	26.85	8.15	8.15	8.15	31.28	31.28	31.28	76.5	77.4	77.4	5.48	5.57	5.57	2.92	2.92	2.92	7	8.00
	18:05		Middle	3.0	26.90	26.90		8.15	8.15		31.28	31.28		77.5	78.3		5.58	5.66		2.92	2.92		9	
14/10/19	17:05	Cloudy	Middle	2.5	28.10	28.10	28.10	7.98	7.98	7.98	31.49	31.49	31.49	86.7	84.4	86.1	5.69	5.54	5.65	5.98	6.02	5.74	7	7.00
	17:06		Middle	2.5	28.10	28.10		7.98	7.98		31.49	31.49		86.3	86.9		5.67	5.71		5.55	5.42		7	
16/10/19	19:15	Cloudy	Middle	2.5	27.20	27.20	27.20	8.03	8.03	8.03	32.27	32.27	32.27	76.1	79.6	78.8	5.05	5.28	5.23	5.37	5.75	5.51	14	14.50
	19:16		Middle	2.5	27.20	27.20		8.03	8.03		32.27	32.27		79.7	79.8		5.29	5.30		5.69	5.24		15	
18/10/19	9:01	Fine	Middle	3.0	25.10	25.10	25.15	7.96	7.96	7.96	29.13	29.13	29.13	79.3	79.8	80.1	5.76	5.81	5.84	3.50	3.50	3.50	7	7.50
	9:03		Middle	3.0	25.20	25.20		7.96	7.96		29.13	29.13		80.4	80.9		5.87	5.92		3.50	3.50		8	
22/10/19	13:30	Fine	Middle	3.0	27.40	27.40	27.50	7.73	7.73	7.73	30.02	30.02	30.02	84.8	85.3	85.6	6.18	6.23	6.26	2.77	2.77	2.77	4	4.00
	13:32		Middle	3.0	27.60	27.60		7.73	7.73		30.02	30.02		86.1	86.2		6.31	6.32		2.77	2.77		4	
24/10/19	15:52	Fine	Middle	3.0	28.00	28.00	28.10	8.36	8.36	8.36	30.09	30.09	30.09	82.7	83.5	83.7	5.97	6.05	6.07	4.71	4.71	4.71	4	4.50
	15:54		Middle	3.0	28.20	28.20		8.36	8.36		30.09	30.09		84.3	84.4		6.13	6.14		4.71	4.71		5	
26/10/19	17:03	Fine	Middle	3.0	27.20	27.20	27.30	7.97	7.97	7.97	28.18	28.18	28.18	81.6	82.4	82.5	5.86	5.94	5.95	4.59	4.59	4.59	4	4.50
	17:05		Middle	3.0	27.40	27.40		7.97	7.97		28.18	28.18		82.5	83.4		5.95	6.04		4.59	4.59		5	

Remarks:  
Single underline denotes exceedance over Action Level.  
Double underline denotes exceedance over Limit Level.



**Water Monitoring Result at RW21-P789 - GEC / CRB / SHK  
Mid-Flood Tide**

Date	Time	Weather Condition	Sampling Depth		Water Temperature		pH			Salinity		DO Saturation		DO		Turbidity		Suspended Solids						
					°C		-			ppt		%		mg/L		NTU		mg/L						
					Value	Average	Value	Average	Value	Average	Value	Average	Value	Average	Value	Average	Value	Average	Value	Average				
27/9/19	17:41	Fine	Middle	4.0	27.10	27.10	27.15	8.13	8.13	8.13	29.92	29.92	29.92	92.7	93.6	93.8	6.80	6.89	6.91	2.88	2.88	2.88	6	6.00
	17:43		Middle	4.0	27.20	27.20		8.13	8.13		29.92	29.92		94.2	94.6		6.95	6.99		2.88	2.88		6	
30/9/19	7:04	Fine	Middle	4.0	26.90	26.90	27.00	7.70	7.70	7.70	28.91	28.91	28.91	80.0	80.9	81.0	5.70	5.79	5.80	4.74	4.74	4.74	6	6.50
	7:06		Middle	4.0	27.10	27.10		7.70	7.70		28.91	28.91		81.6	81.6		5.86	5.86		4.74	4.74		7	
2/10/19	8:44	Fine	Middle	4.0	28.70	28.70	28.75	8.35	8.35	8.35	31.69	31.69	31.69	85.5	85.8	86.1	6.25	6.28	6.31	3.81	3.81	3.81	14	<u>14.00</u>
	8:46		Middle	4.0	28.80	28.80		8.35	8.35		31.69	31.69		86.2	86.7		6.32	6.37		3.81	3.81		14	
4/10/19	-	Fine	Middle	-	-	-	-	-	-	-	-	-	-	-	-	-	-	-	-	-	-	-	-	-
	-		Middle	-	-	-		-	-		-	-		-	-		-	-		-	-		-	
8/10/19	16:36	Fine	Middle	4.0	26.80	26.80	26.85	8.35	8.35	8.35	29.51	29.51	29.51	81.6	81.8	81.9	5.86	5.88	5.89	2.51	2.51	2.51	9	9.50
	16:38		Middle	4.0	26.90	26.90		8.35	8.35		29.51	29.51		82.1	82.2		5.91	5.92		2.51	2.51		10	
10/10/19	17:37	Fine	Middle	4.0	27.10	27.10	27.20	7.86	7.86	7.86	28.93	28.93	28.93	79.4	79.6	80.0	5.77	5.79	5.83	5.76	5.76	5.76	3	3.00
	17:39		Middle	4.0	27.30	27.30		7.86	7.86		28.93	28.93		80.4	80.6		5.87	5.89		5.76	5.76		3	
12/10/19	18:17	Fine	Middle	4.0	26.50	26.50	26.60	7.82	7.82	7.82	28.49	28.49	28.49	77.2	77.5	77.5	5.55	5.58	5.58	3.55	3.55	3.55	5	5.50
	18:19		Middle	4.0	26.70	26.70		7.82	7.82		28.49	28.49		77.5	77.9		5.58	5.62		3.55	3.55		6	
14/10/19	18:00	Cloudy	Middle	3.5	28.00	28.00	28.00	7.94	7.94	7.94	30.71	30.71	30.71	79.5	80.6	80.2	5.26	5.33	5.30	3.83	3.80	3.80	4	4.00
	18:01		Middle	3.5	28.00	28.00		7.94	7.94		30.71	30.71		80.1	80.4		5.30	5.32		3.76	3.79		4	
16/10/19	19:58	Cloudy	Middle	3.5	27.10	27.10	27.10	8.01	8.01	8.01	31.93	31.93	31.93	81.8	83.9	83.1	5.45	5.59	5.54	4.91	4.97	4.74	15	<u>14.00</u>
	19:59		Middle	3.5	27.10	27.10		8.01	8.01		31.93	31.93		84.1	82.7		5.61	5.52		4.34	4.75		13	
18/10/19	9:09	Fine	Middle	4.0	25.60	25.60	25.65	7.52	7.52	7.52	28.52	28.52	28.52	84.5	85.4	85.7	6.15	6.24	6.27	2.90	2.90	2.90	6	6.00
	9:11		Middle	4.0	25.70	25.70		7.52	7.52		28.52	28.52		86.0	86.8		6.30	6.38		2.90	2.90		6	
22/10/19	13:41	Fine	Middle	4.0	27.50	27.50	27.55	7.55	7.55	7.55	28.15	28.15	28.15	78.5	78.6	78.7	5.68	5.69	5.70	2.55	2.55	2.55	5	5.00
	13:43		Middle	4.0	27.60	27.60		7.55	7.55		28.15	28.15		78.7	78.8		5.70	5.71		2.55	2.55		5	
24/10/19	15:59	Fine	Middle	4.0	28.40	28.50	28.48	7.52	7.52	7.52	29.98	29.98	29.98	89.3	90.0	90.3	6.63	6.70	6.73	3.64	3.64	3.64	4	4.00
	16:01		Middle	4.0	28.50	28.50		7.52	7.52		29.98	29.98		90.6	91.3		6.76	6.83		3.64	3.64		4	
26/10/19	17:13	Fine	Middle	4.0	27.50	27.50	27.55	8.34	8.34	8.34	29.45	29.45	29.45	76.5	76.6	76.6	5.48	5.49	5.49	2.65	2.65	2.65	4	4.00
	17:15		Middle	4.0	27.60	27.60		8.34	8.34		29.45	29.45		76.6	76.7		5.49	5.50		2.65	2.65		4	

Remarks:  
Single underline denotes exceedance over Action Level.  
Double underline denotes exceedance over Limit Level.



**Water Monitoring Result at C7 - Windsor House  
Mid-Ebb Tide**

Date	Time	Weather Condition	Sampling Depth		Water Temperature		pH			Salinity		DO Saturation		DO		Turbidity		Suspended Solids						
					°C		-			ppt		%		mg/L		NTU		mg/L						
					Value	Average	Value	Average	Value	Average	Value	Average	Value	Average	Value	Average	Value	Average	Value	Average				
27/9/19	11:19	Fine	Middle	2	27.60	27.60	27.70	7.82	7.82	7.82	29.01	29.01	29.01	75.8	75.9	76.2	5.41	5.42	5.45	5.53	5.53	5.53	5	5.00
	11:21		Middle	2	27.80	27.80		7.82	7.82		29.01	29.01		76.1	76.9		5.44	5.52		5.53	5.53		5	
30/9/19	13:16	Fine	Middle	2	27.40	27.40	27.45	8.49	8.49	8.49	28.34	28.34	28.34	76.4	76.4	76.6	5.47	5.47	5.49	3.59	3.59	3.59	9	9.50
	13:18		Middle	2	27.50	27.50		8.49	8.49		28.34	28.34		76.5	77.0		5.48	5.53		3.59	3.59		10	
2/10/19	14:01	Fine	Middle	2	29.30	29.30	29.35	8.06	8.06	8.06	28.82	28.82	28.82	92.8	93.3	93.7	6.81	6.86	6.90	5.35	5.35	5.35	19	<u>19.00</u>
	14:03		Middle	2	29.40	29.40		8.06	8.06		28.82	28.82		94.2	94.5		6.95	6.98		5.35	5.35		19	
4/10/19	10:26	Fine	Middle	2	29.50	29.50	29.55	8.20	8.20	8.20	31.81	31.81	31.81	86.1	86.3	86.5	6.31	6.33	6.35	2.42	2.42	2.42	18	<u>18.00</u>
	10:28		Middle	2	29.60	29.60		8.20	8.20		31.81	31.81		86.5	87.2		6.35	6.42		2.42	2.42		18	
8/10/19	8:30	Fine	Middle	2	26.90	26.90	27.00	7.67	7.67	7.67	29.61	29.61	29.61	76.7	77.6	78.0	5.50	5.59	5.63	2.24	2.24	2.24	11	11.50
	8:32		Middle	2	27.10	27.10		7.67	7.67		29.61	29.61		78.4	79.1		5.67	5.74		2.24	2.24		12	
10/10/19	10:01	Fine	Middle	2	27.10	27.10	27.15	7.77	7.77	7.77	29.64	29.64	29.64	88.9	89.0	89.6	6.59	6.60	6.66	4.37	4.37	4.37	2	2.00
	10:03		Middle	2	27.20	27.20		7.77	7.77		29.64	29.64		89.8	90.5		6.68	6.75		4.37	4.37		2	
12/10/19	11:21	Fine	Middle	2	26.70	26.70	26.75	8.08	8.08	8.08	31.44	31.44	31.44	92.9	93.8	94.1	6.82	6.91	6.94	2.26	2.26	2.26	3	3.00
	11:23		Middle	2	26.80	26.80		8.08	8.08		31.44	31.44		94.6	95.0		6.99	7.03		2.26	2.26		3	
14/10/19	12:38	Fine	Middle	2	26.80	26.80	26.75	8.03	8.03	8.03	31.08	31.08	31.08	91.1	91.4	91.7	6.64	6.67	6.70	3.64	3.64	3.64	3	3.00
	12:40		Middle	2	26.70	26.70		8.03	8.03		31.08	31.08		92.2	92.2		6.75	6.75		3.64	3.64		3	
16/10/19	13:56	Fine	Middle	2	26.80	26.80	26.85	7.79	7.79	7.79	30.81	30.81	30.81	87.4	87.8	88.3	6.44	6.48	6.53	5.60	5.60	5.60	12	13.00
	13:58		Middle	2	26.90	26.90		7.79	7.79		30.81	30.81		88.6	89.2		6.56	6.62		5.60	5.60		14	
18/10/19	2:00	Cloudy	Middle	2	26.10	26.10	26.10	8.02	8.02	8.02	31.90	31.90	31.90	82.1	81.5	81.6	5.58	5.54	5.55	1.61	1.74	1.62	6	7.00
	2:01		Middle	2	26.10	26.10		8.02	8.02		31.90	31.90		81.5	81.4		5.54	5.54		1.55	1.57		8	
22/10/19	4:16	Fine	Middle	2	25.30	25.30	25.28	7.92	7.92	7.96	31.99	31.99	31.99	78.0	78.8	78.7	5.35	5.41	5.41	1.19	1.07	1.12	<2	<2
	4:17		Middle	2	25.40	25.10		8.00	8.00		31.99	31.99		79.4	78.7		5.45	5.41		1.14	1.09		<2	
24/10/19	9:20	Fine	Middle	2	28.30	28.30	28.35	8.05	8.05	8.05	29.36	29.36	29.36	78.5	78.7	79.1	5.68	5.70	5.74	5.50	5.50	5.50	4	4.00
	9:22		Middle	2	28.40	28.40		8.05	8.05		29.36	29.36		79.3	79.8		5.76	5.81		5.50	5.50		4	
26/10/19	10:28	Fine	Middle	2	27.40	27.40	27.45	8.06	8.06	8.06	29.26	29.26	29.26	82.3	82.4	82.7	5.93	5.94	5.97	3.64	3.64	3.64	3	3.50
	10:30		Middle	2	27.50	27.50		8.06	8.06		29.26	29.26		83.1	83.1		6.01	6.01		3.64	3.64		4	

Remarks:  
Single underline denotes exceedance over Action Level.  
Double underline denotes exceedance over Limit Level.



**Water Monitoring Result at C1 - HKCEC  
Mid-Ebb Tide**

Date	Time	Weather Condition	Sampling Depth		Water Temperature		pH			Salinity			DO Saturation		DO		Turbidity		Suspended Solids					
					°C		-			ppt			%		mg/L		NTU		mg/L					
					Value	Average	Value	Average	Value	Average	Value	Average	Value	Average	Value	Average	Value	Average	Value	Average				
27/9/19	10:58	Fine	Middle	2.5	27.60	27.60	27.65	8.06	8.06	8.06	31.16	31.16	31.16	92.4	93.2	93.4	6.77	6.85	6.87	5.95	5.95	5.95	6	6.00
	11:00		Middle	2.5	27.70	27.70		8.06	8.06	8.06	31.16	31.16		31.16	93.6		94.4	93.4		6.89	6.97		6.87	
30/9/19	-	Fine	Middle	-	-	-	-	-	-	-	-	-	-	-	-	-	-	-	-	-	-	-	-	-
	-		Middle	-	-	-		-	-	-	-	-		-	-		-	-		-	-		-	
2/10/19	14:50	Fine	Middle	3.0	28.70	28.70	28.80	8.41	8.41	8.41	28.88	28.88	28.88	88.8	89.7	89.7	6.58	6.67	6.67	6.70	6.70	6.70	10	10.50
	14:52		Middle	3.0	28.90	28.90		8.41	8.41	8.41	28.88	28.88		28.88	90.0		90.3	89.7		6.70	6.73		6.67	
4/10/19	11:14	Fine	Middle	2.5	29.70	29.70	29.80	7.77	7.77	7.77	30.98	30.98	30.98	91.5	91.6	92.1	6.68	6.69	6.74	2.86	2.86	2.86	16	16.50
	11:16		Middle	2.5	29.90	29.90		7.77	7.77	7.77	30.98	30.98		30.98	92.5		92.6	92.1		6.78	6.79		6.74	
8/10/19	8:38	Fine	Middle	3.0	27.10	27.10	27.15	7.74	7.74	7.74	30.14	30.14	30.14	81.9	82.7	83.0	5.89	5.97	6.00	3.85	3.85	3.85	8	8.00
	8:40		Middle	3.0	27.20	27.20		7.74	7.74	7.74	30.14	30.14		30.14	83.5		83.7	83.0		6.05	6.07		6.00	
10/10/19	10:12	Fine	Middle	3.0	27.30	27.30	27.35	7.98	7.98	7.98	28.34	28.34	28.34	86.5	87.3	87.4	6.35	6.43	6.44	5.82	5.82	5.82	2	2.00
	10:14		Middle	3.0	27.40	27.40		7.98	7.98	7.98	28.34	28.34		28.34	87.5		88.4	87.4		6.45	6.54		6.44	
12/10/19	11:27	Fine	Middle	2.5	26.60	26.60	26.70	7.77	7.77	7.77	31.01	31.01	31.01	90.3	90.6	91.1	6.56	6.59	6.64	5.67	5.67	5.67	6	7.00
	11:29		Middle	2.5	26.80	26.80		7.77	7.77	7.77	31.01	31.01		31.01	91.4		91.9	91.1		6.67	6.72		6.64	
14/10/19	12:11	Fine	Middle	2.5	26.90	26.90	27.00	8.01	8.01	8.01	31.94	31.94	31.94	92.7	92.8	93.1	6.80	6.81	6.84	6.75	6.75	6.75	7	7.00
	12:13		Middle	2.5	27.10	27.10		8.01	8.01	8.01	31.94	31.94		31.94	93.4		93.5	93.1		6.87	6.88		6.84	
16/10/19	13:34	Fine	Middle	2.5	26.30	26.30	26.40	7.54	7.54	7.54	28.69	28.69	28.69	86.4	87.2	87.7	6.34	6.42	6.47	2.90	2.90	2.90	15	14.50
	13:36		Middle	2.5	26.50	26.50		7.54	7.54	7.54	28.69	28.69		28.69	88.1		88.9	87.7		6.51	6.59		6.47	
18/10/19	4:07	Cloudy	Middle	2.5	26.20	26.20	26.20	8.00	8.00	8.00	32.05	32.05	32.05	82.0	82.1	82.3	5.54	5.54	5.56	3.27	3.46	3.43	7	6.50
	4:08		Middle	2.5	26.20	26.20		8.00	8.00	8.00	32.05	32.05		32.05	81.7		83.4	82.3		5.52	5.63		5.56	
22/10/19	6:10	Fine	Middle	2.5	25.40	25.40	25.40	8.00	8.00	8.00	32.40	32.40	32.15	78.9	77.4	79.4	5.36	5.29	5.42	3.40	3.33	3.49	3	3.00
	6:11		Middle	2.5	25.40	25.40		8.00	8.00	8.00	31.40	32.40		32.15	80.9		80.2	79.4		5.54	5.49		5.42	
24/10/19	8:45	Fine	Middle	2.5	28.20	28.20	28.30	8.30	8.30	8.30	31.73	31.73	31.73	91.5	92.3	92.5	6.68	6.76	6.78	2.60	2.60	2.60	4	4.50
	8:47		Middle	2.5	28.40	28.40		8.30	8.30	8.30	31.73	31.73		31.73	92.6		93.4	92.5		6.79	6.87		6.78	
26/10/19	10:36	Fine	Middle	2.5	27.20	27.20	27.35	7.78	7.78	7.78	28.66	28.66	28.66	91.5	91.7	92.0	6.68	6.70	6.73	3.60	3.60	3.60	5	5.00
	10:38		Middle	2.5	27.50	27.50		7.78	7.78	7.78	28.66	28.66		28.66	92.1		92.6	92.0		6.74	6.79		6.73	

Remarks:  
Single underline denotes exceedance over Action Level.  
Double underline denotes exceedance over Limit Level.



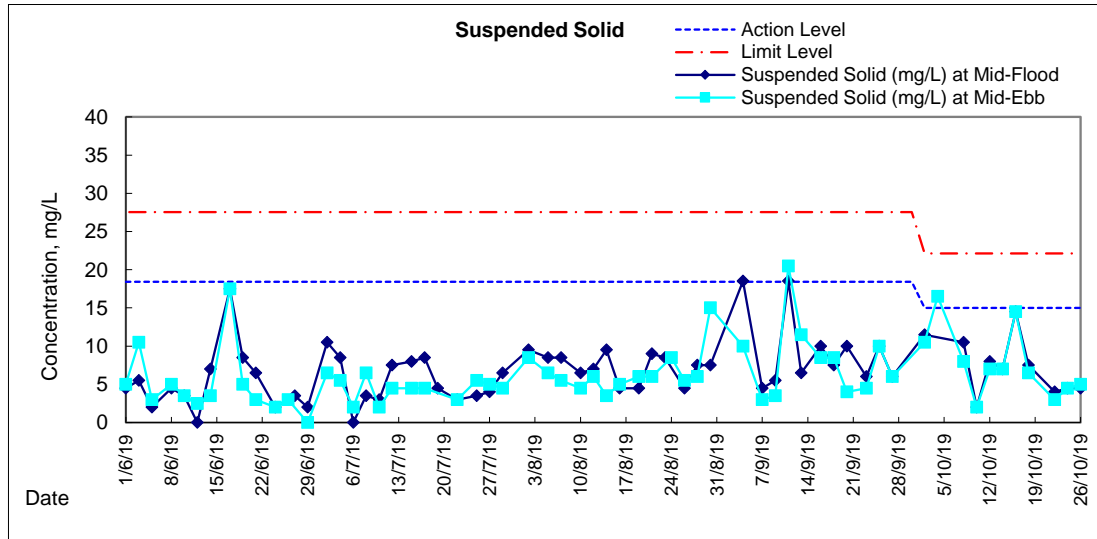
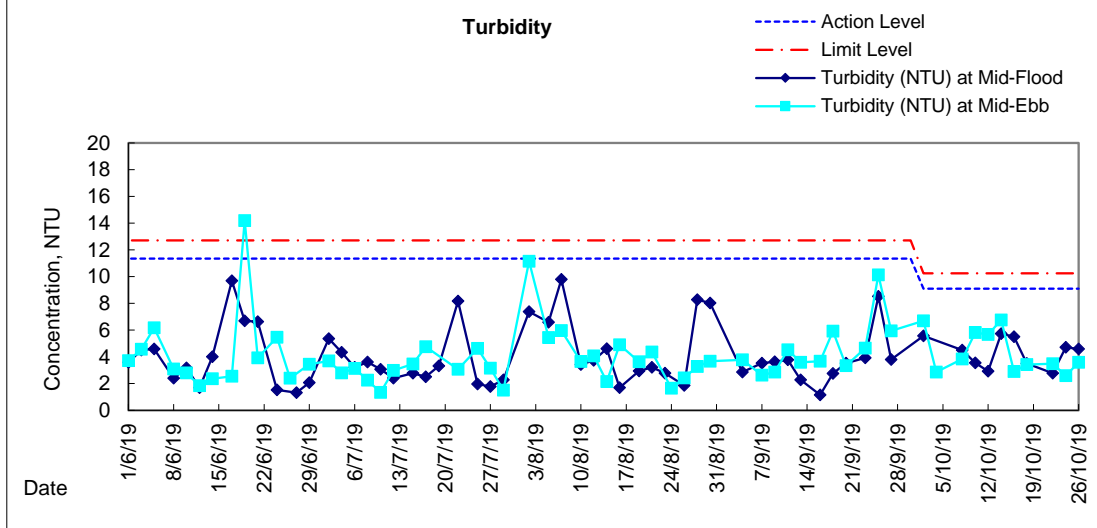
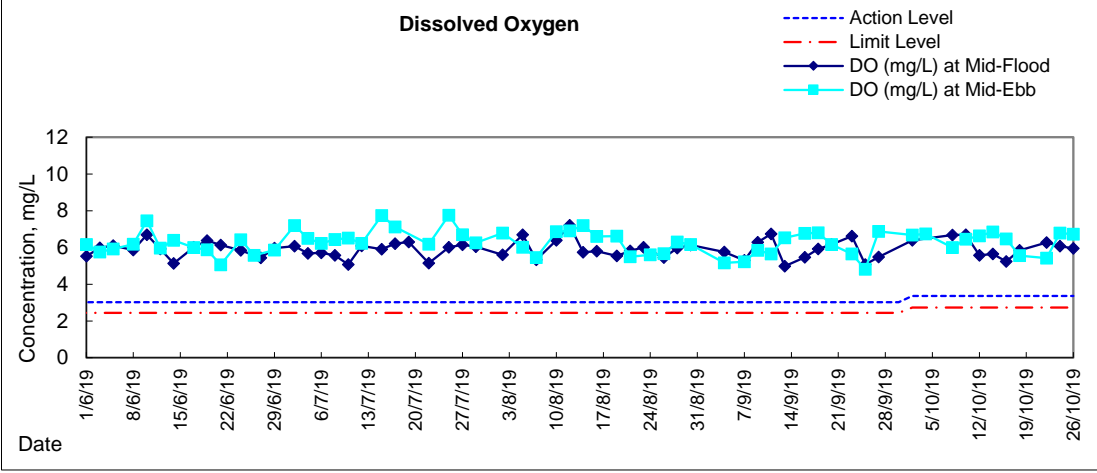
**Water Monitoring Result at RW21-P789 - GEC / CRB / SHK  
Mid-Ebb Tide**

Date	Time	Weather Condition	Sampling Depth		Water Temperature		pH			Salinity		DO Saturation		DO		Turbidity		Suspended Solids						
					°C		-			ppt		%		mg/L		NTU		mg/L						
					Value	Average	Value	Average	Value	Average	Value	Average	Value	Average	Value	Average	Value	Average	Value	Average				
27/9/19	11:06	Fine	Middle	3.5	27.40	27.40	27.45	7.80	7.80	7.80	28.24	28.24	28.24	85.9	86.0	86.2	6.29	6.30	6.32	6.67	6.67	6.67	5	5.00
	11:08		Middle	3.5	27.50	27.50		7.80	7.80		28.24	28.24		86.4	86.6		6.34	6.36		6.67	6.67		5	
30/9/19	13:31	Fine	Middle	3.5	27.30	27.30	27.40	7.79	7.79	7.79	30.12	30.12	30.12	78.5	79.1	79.4	5.68	5.74	5.77	2.62	2.62	2.62	7	7.00
	13:33		Middle	3.5	27.50	27.50		7.79	7.79		30.12	30.12		79.7	80.1		5.80	5.84		2.62	2.62		7	
2/10/19	14:59	Fine	Middle	3.5	29.00	29.00	29.10	8.45	8.45	8.45	31.99	31.99	31.99	75.5	75.7	75.9	5.38	5.40	5.42	3.79	3.79	3.79	13	<u>13.50</u>
	15:01		Middle	3.5	29.20	29.20		8.45	8.45		31.99	31.99		75.8	76.4		5.41	5.47		3.79	3.79		14	
4/10/19	11:22	Fine	Middle	3.5	28.80	28.80	28.85	8.47	8.47	8.47	29.80	29.80	29.80	83.0	83.5	83.6	6.00	6.05	6.06	6.87	6.87	6.87	17	<u>17.00</u>
	11:24		Middle	3.5	28.90	28.90		8.47	8.47		29.80	29.80		83.8	84.2		6.08	6.12		6.87	6.87		17	
8/10/19	8:51	Fine	Middle	3.5	26.90	26.90	26.95	7.80	7.80	7.80	28.98	28.98	28.98	82.5	82.6	83.2	5.95	5.96	6.02	6.72	6.72	6.72	8	8.50
	8:53		Middle	3.5	27.00	27.00		7.80	7.80		28.98	28.98		83.5	84.1		6.05	6.11		6.72	6.72		9	
10/10/19	10:29	Fine	Middle	3.5	26.90	26.90	26.95	8.13	8.13	8.13	30.77	30.77	30.77	85.7	86.0	86.4	6.27	6.30	6.34	5.79	5.79	5.79	3	3.00
	10:31		Middle	3.5	27.00	27.00		8.13	8.13		30.77	30.77		86.6	87.1		6.36	6.41		5.79	5.79		3	
12/10/19	11:42	Fine	Middle	4.0	26.40	26.40	26.50	7.55	7.55	7.55	30.01	30.01	30.01	83.1	83.4	83.8	6.01	6.04	6.08	2.81	2.81	2.81	5	5.50
	11:44		Middle	4.0	26.60	26.60		7.55	7.55		30.01	30.01		84.1	84.6		6.11	6.16		2.81	2.81		6	
14/10/19	12:19	Fine	Middle	3.5	26.40	26.40	26.50	8.12	8.12	8.12	28.88	28.88	28.88	76.0	76.9	76.8	5.43	5.52	5.51	3.81	3.81	3.81	6	6.00
	12:21		Middle	3.5	26.60	26.60		8.12	8.12		28.88	28.88		77.1	77.2		5.54	5.55		3.81	3.81		6	
16/10/19	13:42	Fine	Middle	3.5	26.50	26.50	26.55	8.19	8.19	8.19	28.69	28.69	28.69	90.5	91.1	91.6	6.58	6.64	6.69	3.68	3.68	3.68	15	<u>14.50</u>
	13:44		Middle	3.5	26.60	26.60		8.19	8.19		28.69	28.69		92.0	92.7		6.73	6.80		3.68	3.68		14	
18/10/19	4:50	Cloudy	Middle	3.5	26.40	26.40	26.40	7.95	7.95	7.95	30.99	30.99	30.99	81.2	83.8	82.7	5.52	5.69	5.62	2.32	2.22	2.41	5	4.50
	4:51		Middle	3.5	26.40	26.40		7.95	7.95		30.99	30.99		82.3	83.5		5.59	5.68		2.48	2.61		4	
22/10/19	5:15	Fine	Middle	3.5	25.60	25.60	25.60	7.85	7.85	7.85	31.66	31.66	31.66	80.8	82.9	81.4	5.24	5.69	5.51	2.13	2.19	2.13	4	3.50
	5:16		Middle	3.5	25.60	25.60		7.85	7.85		31.66	31.66		81.2	80.6		5.58	5.53		2.07	2.11		3	
24/10/19	8:56	Fine	Middle	3.5	28.60	28.60	28.65	8.43	8.43	8.43	29.95	29.95	29.95	77.1	77.9	78.0	5.54	5.62	5.63	4.63	4.63	4.63	4	4.00
	8:58		Middle	3.5	28.70	28.70		8.43	8.43		29.95	29.95		78.5	78.5		5.68	5.68		4.63	4.63		4	
26/10/19	10:52	Fine	Middle	3.5	27.30	27.30	27.40	8.04	8.04	8.04	29.52	29.52	29.52	82.4	83.0	83.2	5.94	6.00	6.02	3.82	3.82	3.82	4	4.50
	10:53		Middle	3.5	27.50	27.50		8.04	8.04		29.52	29.52		83.6	83.7		6.06	6.07		3.82	3.82		5	

Remarks:  
Single underline denotes exceedance over Action Level.  
Double underline denotes exceedance over Limit Level.

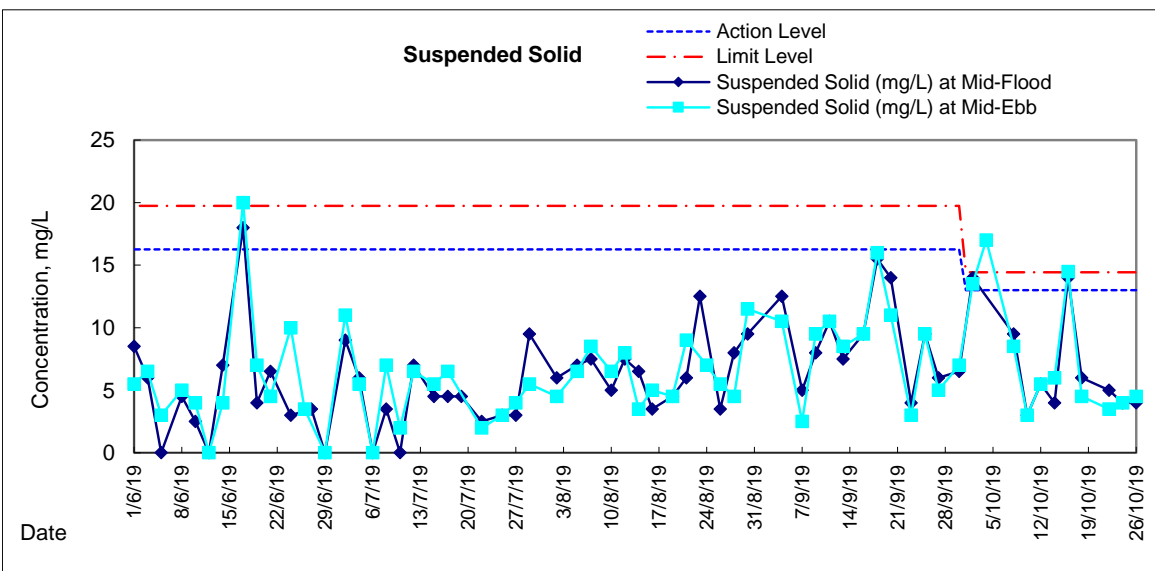
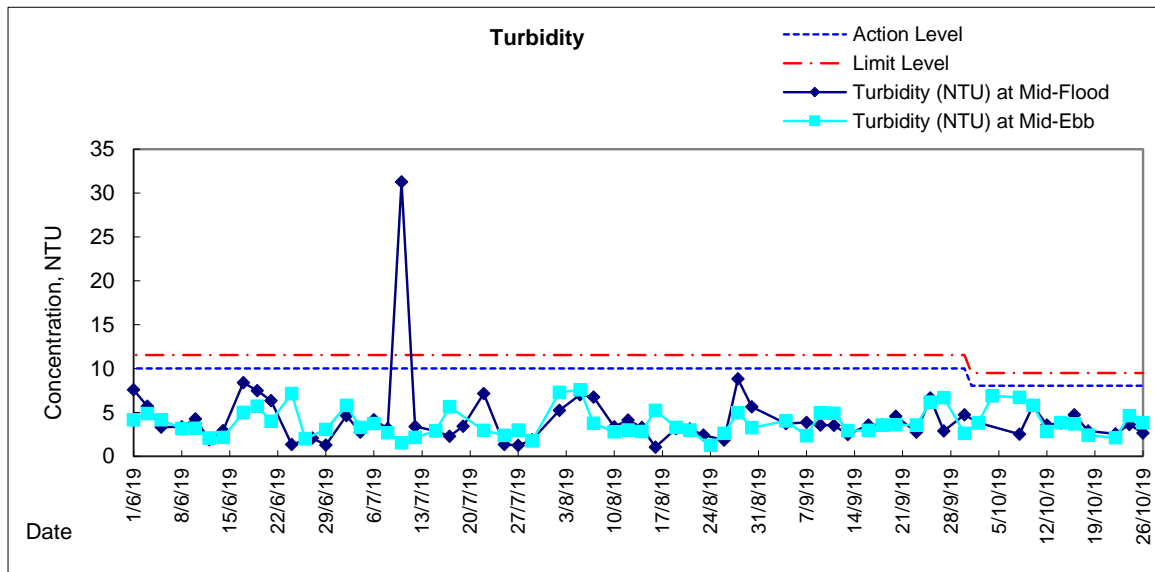
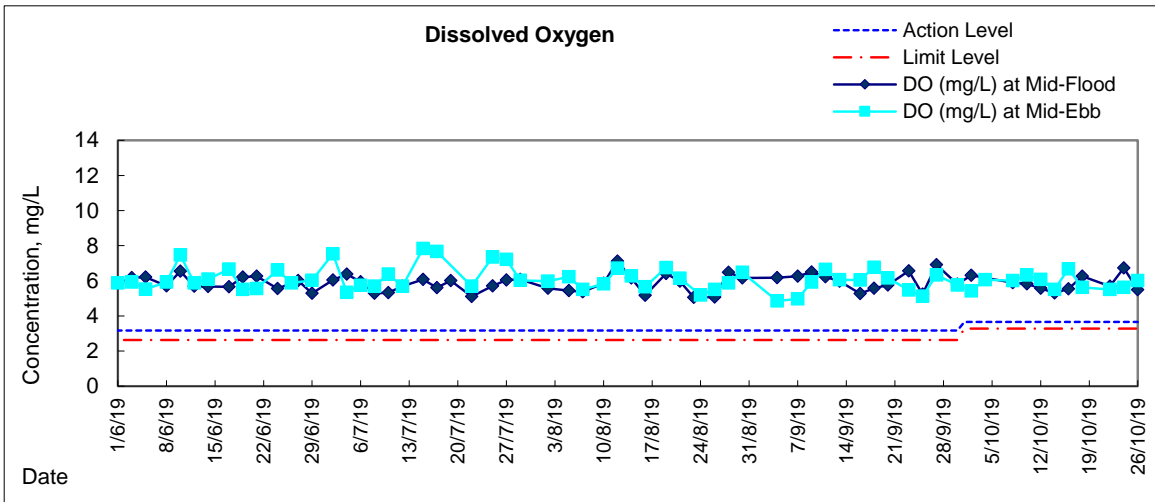


### Graphic Presentation of Water Quality Result of C1 - HKCEC





# Graphic Presentation of Water Quality Result of RW21-P789 - GEC/CRC/SHK







# Graphic Presentation of Water Quality Result of C7 - Windsor House

